

# How to install multiple instances of FIXEdge on a single host

- [Overview](#)
- [Installation directories](#)
  - [Windows](#)
  - [Linux](#)
- [Important precaution notes before starting changes](#)
- [Installation](#)
  - [Windows](#)
  - [Linux](#)
- [Example Configuration used for testing](#)
- [Uninstall](#)
  - [Windows](#)
  - [Linux](#)
- [Troubleshooting](#)
  - [Server installation fails with the error "Cannot create service. The specified service already exists in this database"](#)
  - [The second instance of fixicc-agent installs and starts without errors but doesn't appear in services](#)
  - [The server does not start from FIXICC GUI. The process starts and hangs for a long time, but no error messages appear in the details field.](#)

## Overview

This document describes two-instance FIXEdge installation on one host using two independent sets of binaries and configs. These installations can be updated, managed, or uninstalled independently.

The general single-instance FIXEdge installation procedure is described in [FIXEdge Installation Guide](#) and it is recommended to read it before following this procedure. Keep in mind that our example may differ from that in the one-instance installation procedure (e.g. directories names).

It is assumed that the user has no installed instances of FIXEdge. The step-by-step procedure is provided for installation from a non-customized distributive package.

## Installation directories

### Windows

1. c:\B2BITS\FIXEdge\_one
2. c:\B2BITS\FIXEdge\_two

### Linux

1. /home/user/B2BITS/FIXEdge\_one
2. /home/user/B2BITS/FIXEdge\_two

where a **user** is the name of the user performing the installation

## Important precaution notes before starting changes



Remember that Linux OS is case-sensitive. That means that e.g. FIXEdge1.sh and FixEdge1.sh are different files.

Pay attention to port values – using one port value in several instances may lead to conflicts and failures.

## Installation

### Windows

1. Extract distribution archive of FIXEdge to the instance 1 folder (in our test case it is B2BITS1 on c: drive). Extract distributive archive of FIXEdge to the instance 2 folder (in our test case it is B2BITS2 on c: drive)
2. Put license file to 1<sup>st</sup> instance FIXEdge root directory (c:\B2BITS\FIXEdge\_one\FIXEdge). Put license file to 2<sup>nd</sup> instance fixedge root directory (c:\B2BITS\FIXEdge\_two\FIXEdge).
3. Edit service names in a wrapper.conf file for 2<sup>nd</sup> instance for they must be different from 1<sup>st</sup> instance names.

```

wrapper.conf

# Name of the service
wrapper.ntservice.name=FIXICC - Agent FIXEdge2

# Display name of the service
wrapper.ntservice.displayname=FIXICC - Agent FIXEdge2

```

4. Change port values in configuration files (see example in [ExampleConfigurationusedfortesting](#))

| parameter                         | configuration file |
|-----------------------------------|--------------------|
| ListenPort                        | engine.properties  |
| Monitoring.ListenPort             | engine.properties  |
| ControlCentre.XMLSockMonitor.Port | FIXEdge.properties |
| AgentServerPort                   | agent.properties   |

5. Open cmd.exe as Administrator and run the following scripts

```

C:>\B2BITS\FIXEdge_one\FIXEdge\fixicc-agent\bat>installService.FIXEdge1.bat
C:>\B2BITS\FIXEdge_one\FIXEdge\fixicc-agent\bat>startService.FIXEdge1.bat
C:>\B2BITS\FIXEdge_one\FIXEdge\bin\FIXEdge1.install.cmd

```

- 6. Edit the following files for 2<sup>nd</sup> instance  
 In B2BITS\FIXEdge\_two\FIXEdge\FIXEdge1\conf\FIXEdge.properties file set parameter ServiceName=FIXEdge2  
 In B2BITS\FIXEdge\_two\FIXEdge\FIXEdge1\bin\FIXEdge1.install.cmd change FIXEdge.FIXEdge1 to FIXEdge.FIXEdge2  
 In B2BITS\FIXEdge\_two\FIXEdge\FIXEdge1\bin\FIXEdge1.service.run.cmd change FIXEdge.FIXEdge1 to FIXEdge.FIXEdge2  
 In B2BITS\FIXEdge\_two\FIXEdge\FIXEdge1\bin\FIXEdge1.service.stop.cmd change FIXEdge.FIXEdge1 to FIXEdge.FIXEdge2  
 In B2BITS\FIXEdge\_two\FIXEdge\FIXEdge1\bin\FIXEdge1.uninstall.cmd change FIXEdge.FIXEdge1 to FIXEdge.FIXEdge2

7. Open cmd.exe as Administrator and run the following scripts

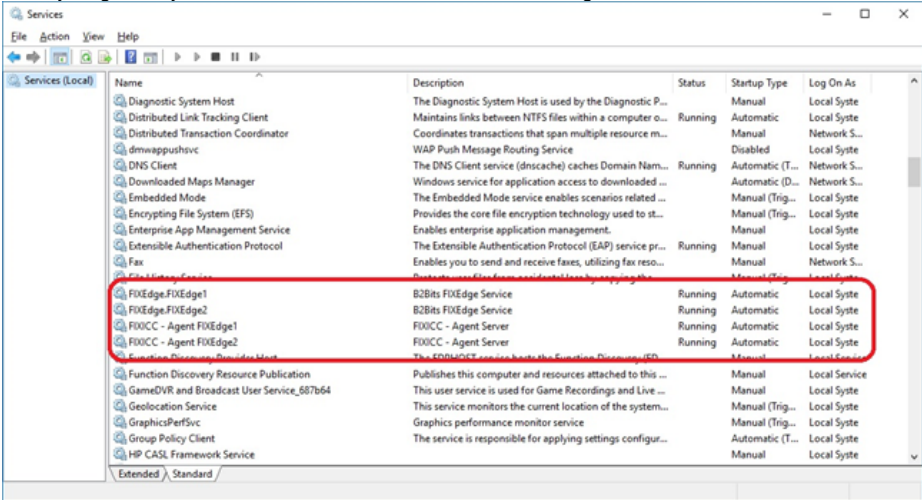
```

C:>\B2BITS\FIXEdge_two\FIXEdge\fixicc-agent\bat>installService.FIXEdge1.bat
C:>\B2BITS\FIXEdge_two\FIXEdge\fixicc-agent\bat>startService.FIXEdge1.bat
C:>\B2BITS\FIXEdge_two\FIXEdge\bin\FIXEdge1.install.cmd

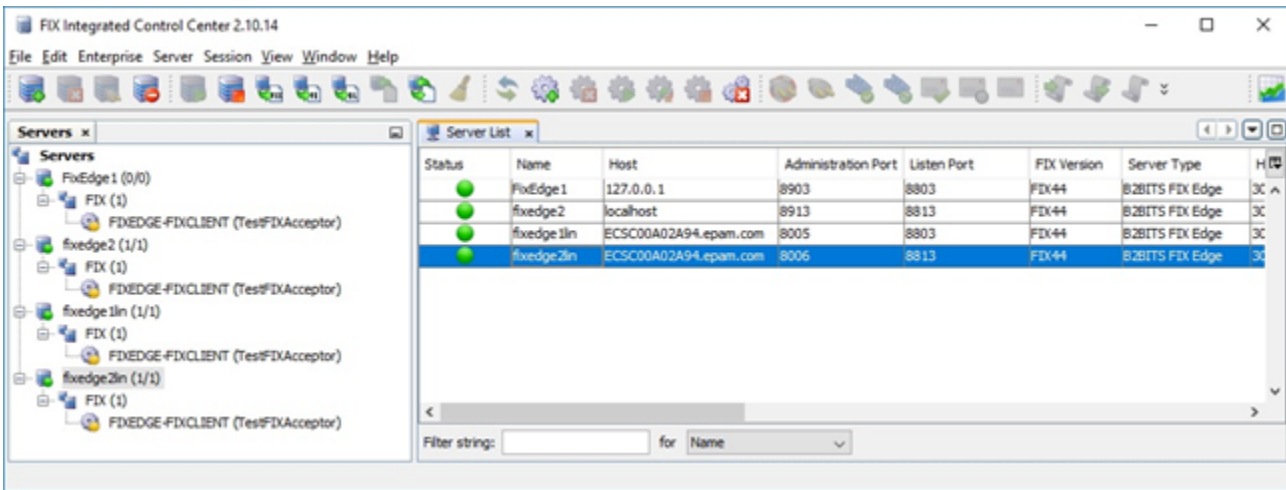
```

8. You can connect to the server and start the server in FIXICC in the same manner as for one-instance case (for details see <https://kb.b2bits.com/display/B2BITS/FIXEdge+Installation+Guide>)

If everything is OK you can see services for both instances running



In FIXICC GUI you can see both servers started



## Linux

1. Extract distribution archive of FIXEdge to the instance 1 folder /home/user/B2BITS/FIXEdge\_one. Extract distribution archive of FIXEdge to the instance 2 folder /home/user/B2BITS/FIXEdge\_two.
2. Put license file to 1<sup>st</sup> instance fixedge root directory /home/user/B2BITS/FIXEdge\_one/FIXEdge. Put license file to 2<sup>nd</sup> instance fixedge root directory /home/user/B2BITS/FIXEdge\_two/FIXEdge.
3. Edit B2BITS/FIXEdge\_two/FIXEdge/fixicc-agent/conf/wrapper.conf (change service names)

```

# *****
# Wrapper Windows Service and Posix Daemon Properties
# *****
# Name of the service
wrapper.ntservice.name=FIXICC_Agent_Server2
# Display name of the service
wrapper.ntservice.displayname=FIXICC - AgentServer2

```

4. Change port values in configuration files (see example in [Example Configuration used for testing](#))

| parameter                         | configuration file |
|-----------------------------------|--------------------|
| ListenPort                        | engine.properties  |
| Monitoring.ListenPort             | engine.properties  |
| ControlCentre.XMLSockMonitor.Port | Fixedge.properties |
| AgentServerPort                   | agent.properties   |

5. run installation and start service scripts

```

$>/home/user/B2BITS/FIXEdge_one/FIXEdge/fixicc-agent/bin/installDaemon.sh
$>/home/user/B2BITS/FIXEdge_one/FIXEdge/fixicc-agent/bin/startDaemonNoPriv.sh
$>/home/user/B2BITS/FIXEdge_two/FIXEdge/fixicc-agent/bin/installDaemon.sh
$>/home/user/B2BITS/FIXEdge_two/FIXEdge/fixicc-agent/bin/startDaemonNoPriv.sh

```

6. Check processes via ps command

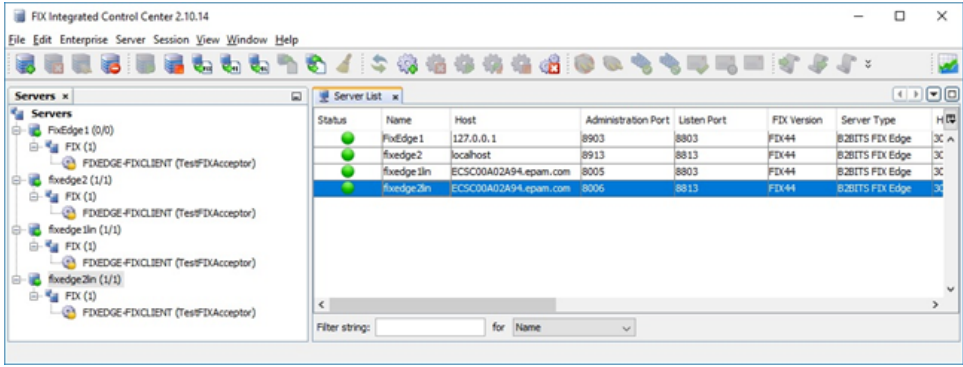
```

ps -eF | grep java
ps -eF | grep FIXEdge

```

7. Connect to the server and start the server in FIXICC in the same manner as for a one-instance case (for details see [FIXEdge Installation Guide](#)) If everything is working you can see servers started in FIXICC GUI (on the picture below you can see our test case example. The first two string

correspond to the windows case and the last two strings show two Linux fixedge instances running)



## Example Configuration used for testing

For Windows installations, FIXICC GUI application is running on the same windows machine

Port configuration

| parameter                         | configuration file | FIXEdge1 windows | FIXEdge2 windows | FIXEdge1 linux | FIXEdge2 linux |
|-----------------------------------|--------------------|------------------|------------------|----------------|----------------|
| ListenPort                        | engine.properties  | 8901             | 8911             | 8901           | 8911           |
| Monitoring.ListenPort             | engine.properties  | 8803             | 8813             | 8803           | 8813           |
| ControlCentre.XMLSockMonitor.Port | FIXEdge.properties | 8902             | 8912             | 8902           | 8912           |
| AgentServerPort                   | agent.properties   | 8903             | 8913             | 8005           | 8006           |

## Uninstall

If you wish to uninstall both instances of FIXEdge you should do the following steps depending on what operating system you are running

### Windows

1. Open cmd.exe as Administrator and run scripts

```
C:\B2BITS\FIXEdge_one\FIXEdge\fixicc-agent\bat\stopService.FIXEdge1.bat
C:\B2BITS\FIXEdge_one\FIXEdge\fixicc-agent\bat\uninstallService.FIXEdge1.bat

C:\B2BITS\FIXEdge_two\FIXEdge\fixicc-agent\bat\stopService.FIXEdge1.bat
C:\B2BITS\FIXEdge_two\FIXEdge\fixicc-agent\bat\uninstallService.FIXEdge1.bat

C:\B2BITS\FIXEdge_one\FIXEdge\bin\FIXEdge1.uninstall.cmd
C:\B2BITS\FIXEdge_two\FIXEdge\bin\FIXEdge1.uninstall.cmd
```

2. Remove **B2BITS\FIXEdge\_one** and **B2BITS\FIXEdge\_two** folders recursively

### Linux

1. run scripts

```

$>/home/user/B2BITS/FIXEdge_one/FIXEdge/fixicc-agent/bin/stopDaemonNoPriv.sh
$>/home/user/B2BITS/FIXEdge_one/FIXEdge/fixicc-agent/bin/uninstallDaemon.sh

$>/home/user/B2BITS/FIXEdge_two/FIXEdge/fixicc-agent/bin/stopDaemonNoPriv.sh
$>/home/user/B2BITS/FIXEdge_two/FIXEdge/fixicc-agent/bin/uninstallDaemon.sh

$>/home/user/B2BITS/FIXEdge_one/FIXEdge/bin/FIXEdge1.stop.sh
$>/home/user/B2BITS/FIXEdge_two/FIXEdge/bin/FIXEdge1.stop.sh

```

2. Remove **B2BITS/FIXEdge\_one** and **B2BITS/FIXEdge\_two** folders recursively

## Troubleshooting

Related articles:

- [Deployment diagram for multiple FIXEdge instances](#)
- [FIXEdge installation on Linux. Step by step instruction](#)
- [FIXEdge installation on Windows. Step by step instruction](#)

### Server installation fails with the error "Cannot create service. The specified service already exists in this database"

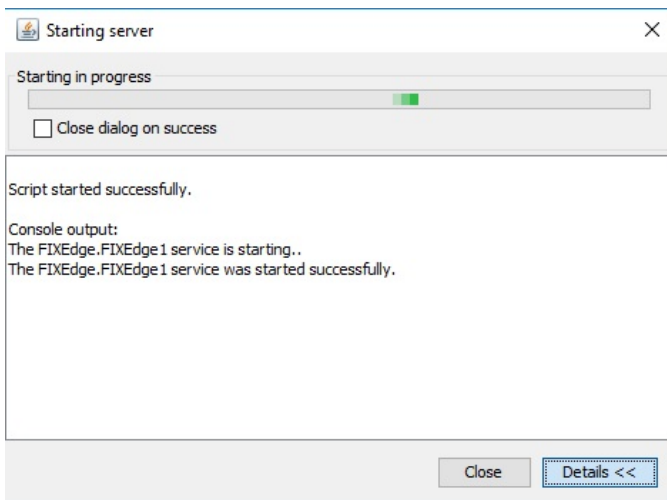
Check the **ServiceName** parameter in FIXEdge.properties file.

### The second instance of fixicc-agent installs and starts without errors but doesn't appear in services

|  |  |                   |               |
|--|--|-------------------|---------------|
| File History Service                     | Protects user files from accidental loss by copying the... | Manual (Trig...   | Local System  |
| FIXEdge.FIXEdge1                         | B2Bits FIXEdge Service                                     | Manual            | Local System  |
| FIXEdge.FIXEdge2                         | B2Bits FIXEdge Service                                     | Manual            | Local System  |
| FIXICC - Agent FIXEdge1                  | FIXICC - Agent Server                                      | Running Automatic | Local System  |
| Function Discovery Provider Host         | The FDPHOST service hosts the Function Discovery (FD...    | Manual            | Local Service |
| Function Discovery Resource Publication  | Publishes this computer and resources attached to this ... | Manual            | Local Service |
| GameNVR and President How Service 0x0734 | This service is used for Game Recorder and Live...         | Manual            | Local System  |

Check **wrapper.conf** file – service names must be changed.

### The server does not start from FIXICC GUI. The process starts and hangs for a long time, but no error messages appear in the details field.



Check server name parameter in FIXEdge1.service.run.cmd.

Try to run FIXEdge as console application to get full error using FIXEdge1.run.cmd or FIXEdge1.run.sh