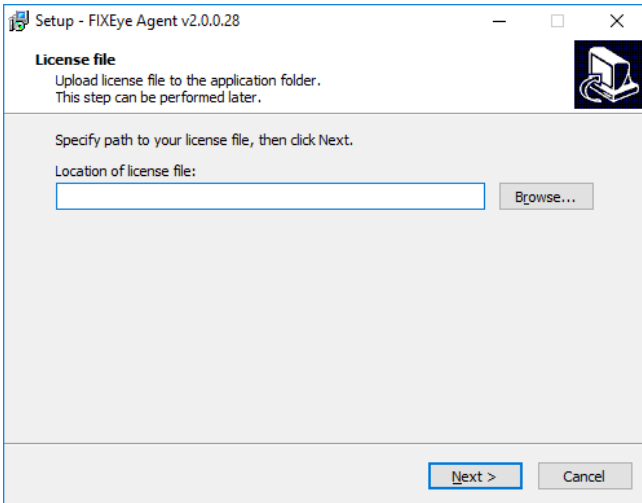


FIXEye Agent installation and start (Windows)

- Step 1. Download the latest FIXEye Agent installer from B2BITS clientspace and run it.
- Step 2. Specify a path to your license file.
- Step 3. Install the application.
- Step 4. Configure a service.
- Step 5. Start FIXEyeAgentSvc service.
- Step 6. Add FIXEye Agent to FIXEye.

Step 1. Download the latest FIXEye Agent installer from B2BITS clientspace and run it.

Step 2. Specify a path to your license file.

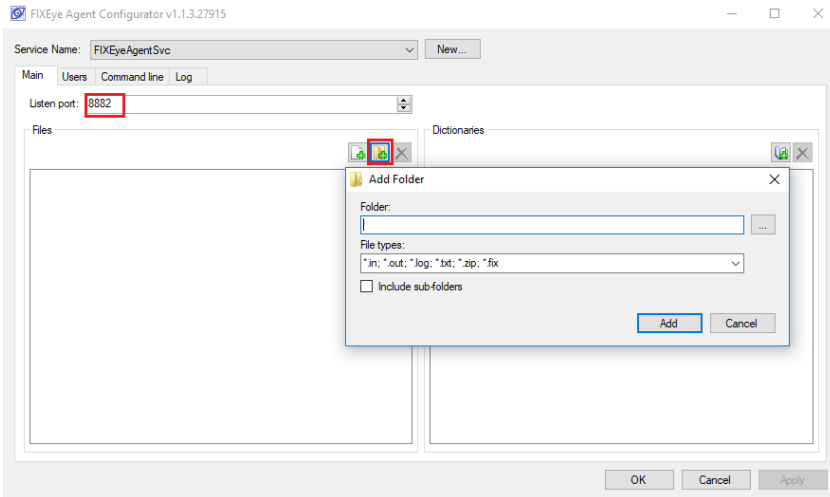


You can skip this step by clicking "Next" and add the license file later to a root folder of the FIXEye Agent (license default folder).

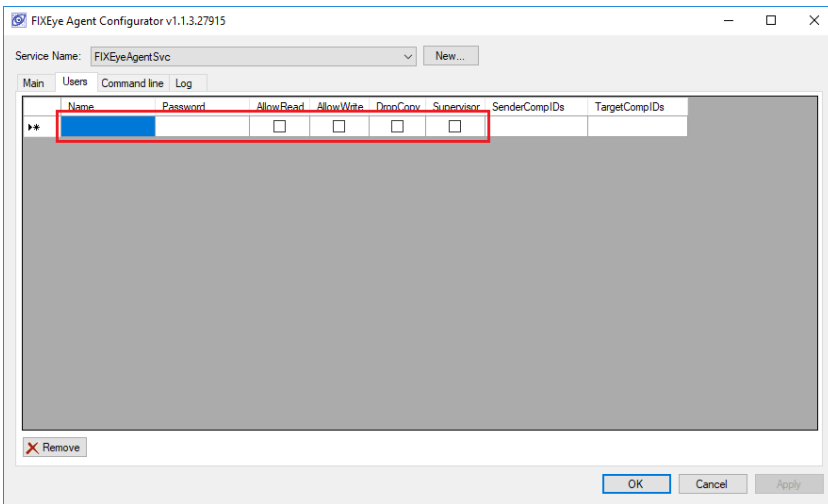
Step 3. Install the application.

Step 4. Configure a service.

- Run FIXEyeAgentConfigurator.exe (placed in the FIXEye Agent root folder) as Administrator.
- Specify a listen port and choose a folder with logs:



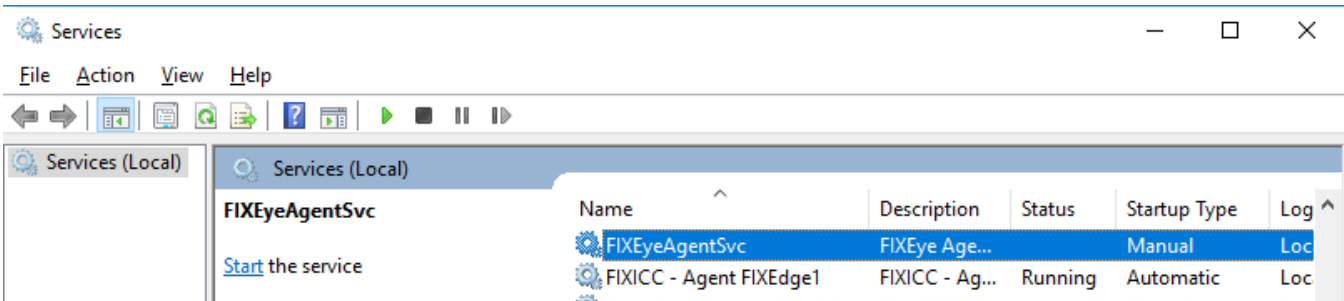
- Set connection parameters (from the FIXEye application): username, password and rights:



- Click "OK" to create a service. A new folder in the FIXEye Agent root folder will be created:

Name	Date modified	Type	Size
FIXEyeAgent.FIXEyeAgentSvc	8/23/2018 3:06 PM	File folder	
samples	8/23/2018 2:43 PM	File folder	
concr140.dll	7/19/2018 7:10 PM	Application extens...	245 KB
fixdic40.xml	7/31/2018 3:42 PM	XML File	162 KB
fixdic41.xml	7/31/2018 3:42 PM	XML File	262 KB
fixdic42.xml	7/31/2018 3:42 PM	XML File	579 KB
fixdic43.xml	7/31/2018 3:42 PM	XMI File	799 KB

Step 5. Start FIXEyeAgentSvc service.



Step 6. Add FIXEye Agent to FIXEye.

[Adding FIXEye Agent to FIXEye](#)